



SYDNEY CENTRAL YHA

BUDGET GROUP ACCOMMODATION – 2018

Conveniently located just across from Central Railway Station and interstate coach terminals, Sydney Central YHA offers groups affordable accommodation and modern facilities in an excellent location. Accommodating up to 150 people in a landmark building, this property is ideal for groups wanting to make the most of their time in Sydney from a comfortable, central base.

Cnr Pitt St and Rawson Place
Sydney 2000
(02) 9218 9018
sydcentralgroups@yha.com.au



YHAGROUPS.COM.AU



MULTI-SHARE ROOMS

Groups are accommodated in comfortable 4 or 6 share rooms with communal bathrooms located on every floor. Each room is equipped with lockers, individual reading lights, a table and chairs. Bed linen is provided.

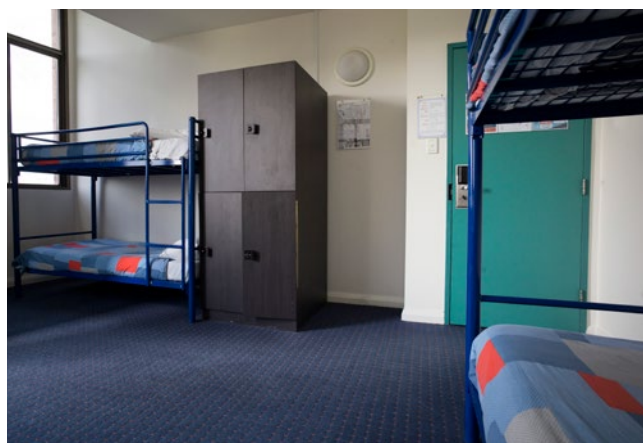
PRIVATE ROOMS

We have a selection of both twin and double rooms, with private or shared bathrooms, for anyone wanting extra privacy. These rooms are conveniently located near to our multi-share rooms, so you can be next to the rest of your group.

FACILITIES

Sydney Central YHA offers the following:

- 24 hour reception
- Group Meeting/Conference room
- On site cafe, providing both in house and takeaway meal options
- Secure electronic key card access to all bedrooms and bathrooms
- TV lounges
- Air-conditioning throughout the building
- Laundry facilities
- Full wheelchair access
- Lockers in all shared rooms
- Wi-Fi





GROUPS AREA

Sydney Central YHA has a dedicated meeting room ideal for group briefings, or small meetings and conferences.

The room has audio-visual equipment and whiteboards, and can be set up either theatre style or round-table. The room will be clear on arrival, so you can set it up however you prefer.

When booking this room, you also get access to a basic kitchenette that contains a fridge, oven, stove-top and a microwave. There are also tea and coffee making facilities.

We offer discounted rates on this room, for any groups already staying with us.

RATES

SESSION	9AM-1PM	1PM-5PM	5PM-9PM
External Groups	\$125	\$125	\$125
In-House Groups	\$80	\$80	\$80





GROUP RATES

ROOM TYPE	BED AND BREAKFAST	FULL BOARD
4-6 Bed Multi-Share Room	From \$55.00 pp	From \$81.00 pp
Single	From \$118.00 pr	From \$144.00 pr
Single Ensuite	From \$135.50 pr	From \$161.50 pr
Double/Twin shared bathroom	From \$125.50 pr	From \$177.50 pr
Double/Twin Ensuite	From \$143.00 pr	From \$195.00 pr

pp = Per Person, pr = Per Room. All rates are per night.
All rates are bed and breakfast.

Prices valid for stays between 1 January and 31 December 2018.

All prices are in AUD and include GST.

Please note, there is a surcharge of \$5 per person for single night stays.

Optional Extras

Towel Hire - \$2 per towel

Premium Wi-Fi - \$2 per person, per day



INFORMATION FOR TEACHERS

For all Australian Primary and High Schools, we will provide one free twin room for every 20 students booked. Coach Drivers are also accommodated for free in their own room.

YHA'S COMMITMENT TO YOUR GROUP

- We have a dedicated Group Coordinator to help with anything your group needs, from enquiry to check out.
- We take all reasonable precautions to ensure the safety and security of your group and are pro-active in ensuring we maintain the highest possible standards in the field of risk management.
- Staff members are available 24/7 to help with any issues or emergencies.
- All of our staff are trained and capable of handling any emergency situations that may arise.
- Your group will be allocated separate bedrooms and you will not share any rooms with other guests that are not in your group.
- Group leaders will be allocated separate rooms to anyone under the age of 18, unless otherwise requested.
- We will allocate your rooms as close as possible to each other, to enable easy supervision of your group.

A comprehensive risk assessment for our properties is available on our website at yhagroups.com.au.

YHA'S MISSION AND MEMBERSHIP

YHA is a not-for-profit membership organisation, and part of Hostelling International, the world's largest youth travel organisation. YHA's mission is to provide opportunity for all, but especially young people, for education through travel.

The organisation has a strong commitment to sustainability with a program of environmental initiatives including solar power, water saving and recycling.

All groups that stay with YHA automatically qualify for group membership. This provides a range of benefits and is at no extra charge to you as it is included in your stay. Full details of this are available from our Group Coordinator.



CATERING

In order to make everything as simple as possible for your stay, we are able to offer full catering options. Our cafe provides fresh, tasty and healthy food and can handle any special dietary requirements your group may have.

The group dining area can comfortably seat up to 80 people at one time. For any groups over 80 people, we may need to stagger meal times over multiple sittings.

Breakfast

Continental – Included

(Enjoy a selection of cereals, milk, juices, toast, tea and coffee)

Breakfast Upgrade available – \$7.50 extra per person
(Cooked breakfast with bacon and eggs)

Lunch

3 options - \$8.00 per person

(Includes a sandwich, a piece of fruit and a small snack)

Dinner

2 courses – \$18.00 per person

(A range of healthy main meals and dessert)

Three course dinner upgrade – \$1.50 per person
(Choice of three entrees)

A full list of all meal options is available and will be provided when your booking is made. If you require this in advance, we are more than happy to provide it.

SELF-CATERING

There are many local restaurants and cafes in the local area if you would prefer to eat out for your meals.

Please note that our property does not offer self-catering for groups.





THINGS TO DO IN SYDNEY

Located next to Chinatown and Darling Harbour, it is easy to explore the city centre with access to all the main sights and attractions. Our dedicated Groups Coordinators can help organise your activities, so ask us for more information when booking.

Some of the most popular things to do include:

- Chinatown – explore this cultural precinct
- Powerhouse Museum – close by in Pyrmont
- Barangaroo – walk through the new headland park
- Sydney Opera House – take a backstage tour
- The Rocks precinct – explore the city's colonial history
- Sydney Harbour Bridge – walk over the bridge or visit the Pylon Museum
- Sydney Harbour ferries cruises – leaving from Circular Quay
- Sydney Aquarium and Wildlife World – nearby at Darling Harbour
- Madame Tussauds
- Taronga Zoo – take the ferry with combined transport/entry ticket





GETTING TO SYDNEY CENTRAL YHA

By Train

We are across the road from Central Station.

There is a train service running every 10 minutes between 5am and 11pm from the airport terminals that takes 10-15 minutes.

Airport Shuttle Transfers

An airport shuttle bus service runs between 5am – 7pm to our property and must be pre-booked. It takes approximately 30 – 45 minutes each way, (up to an hour depending on traffic). If you have a group of over 10, our Group Coordinator can arrange transport for your group to and from the airport.

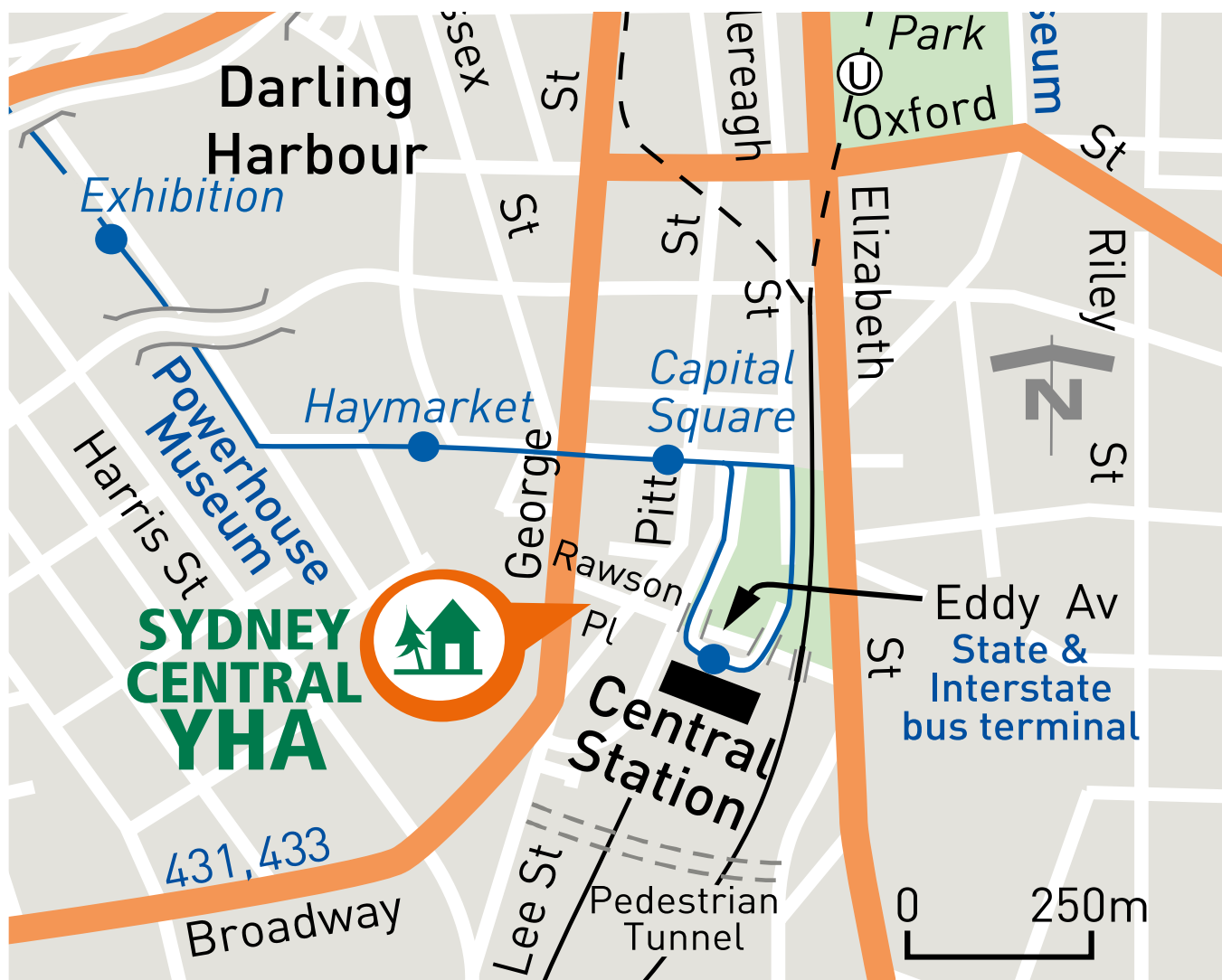
By Bus/Car

Our property is located on the corner of Pitt Street and Rawson Place, right next to Sydney Central Station. There are a number of drop off zones for buses nearby – please contact us for up to date information on the best drop off point for your group.

Parking

Limited secure underground parking is available at the Sydney Central YHA and must be booked in advance. The rate is \$25 per vehicle per night. Height restriction of 1.9 metres. Limited disabled parking is also available and must be booked in advance through our Group Coordinator. Casual parking is available at Goulburn Street Parking Station nearby.

Coach parking is available at Darling Street for vehicles with coach plates and subject to availability.





TERMS AND CONDITIONS

Making a group booking is conditional upon there being sufficient capacity at the property to accommodate the booking and the booking being accepted by YHA.

Payment Schedule

- A 25% non-refundable deposit (minimum \$250) is required within 14 days in order to secure your booking.
- The full balance is required at least 21 days (3 weeks) prior to arrival.

If these payments are not received on time, YHA reserves the right to cancel your booking, retaining all previously paid funds as a cancellation fee.

Refunds and Cancellations

In the event that you have to cancel your booking, the following cancellation policy will apply:

- More than 21 days prior to arrival, 25% of the total balance (minimum \$250) will be retained as a cancellation fee.
- Between 15 and 21 days prior to arrival, 75% of the total balance will be retained as a cancellation fee.
- Within 14 days of arrival, no refunds are available.

Group Numbers:

- Final numbers are required at least 21 days prior to arrival.
- Any increase in numbers at any stage will be treated as a request. We will do our best to accommodate them, but cannot guarantee this.
- If there is a decrease in group numbers of more than 10% of the total amount, the above cancellation fees will apply – unless it is within 14 days of arrival. In this case, there will be no refund.

Notice of Liability

The group leader must agree to ensure that their group will abide by the YHA requirements listed below and any reasonable instructions made by the property manager or staff. The group leader must undertake:

1. To accept responsibility for proven damage or loss caused by the group to property occupancy, building, equipment including safety and security systems. To recompense YHA for any such loss or damage, including refunds to other guests that cannot be accommodated as the result of or related to serious group misbehaviour.
2. To abide by the conditions of payment for a booking, including the cancellation policy as detailed above.
3. To ensure that any children in the group are supervised at all times. Children must be supervised in public areas that may include elevators, swimming pools and rooftop areas.
4. To agree that YHA does not accept responsibility for accidents which may occur to any group member, or for any damage or theft of property whilst using YHA properties.
5. Not to drink alcohol excessively at the property. If members of the group are under 18, to agree not to bring alcohol onto the property premises or to return to the premises in an intoxicated state. Leaders are particularly responsible for ensuring any group member under 18 years of age abides by YHA's policies barring smoking and consumption of alcohol.

6. To follow all parking and other specific requests of the property management.
7. To ensure the group does not block entrances or exits to the property at any time.
8. To ensure the group does not interfere with or block access to any of the fire equipment or services throughout the building including smoke detectors, fire extinguishers and fire exits.

General Obligations

YHA undertakes to provide the agreed services at the agreed times by the Property. This obligation does not apply under circumstances beyond the control of YHA such as:

- If the group does not arrive
- If the group fails to pay the deposit or balance on time

Additional Provisions

1. Standard property policies will be clearly displayed or made available to all guests within the property. Group members are expected to comply with such property policies.
2. A bond may be required from group guests – at the Manager's discretion.
3. YHA reserves the right at all times and without prior notice to stop accommodating a group if one or more group members contravenes property policies. No refunds will be given in these circumstances.
4. YHA reserves the right to charge administration fees when numerous changes are made to bookings.
5. YHA reserves the right to charge administration fees for late payments.
6. YHA reserves the right to have event rates, minimum night stay restrictions and non-refundable periods during peak times.

Meals

If you are ordering meals, please note that all catering orders and special dietary requirements need to be finalised at least 3 weeks prior to arrival. Please be aware most properties cannot facilitate self-catering by groups. **Please check the information provided by each property.**

Cancellation by YHA

YHA reserves the right to terminate a booking without any obligation to pay compensation if there is sufficient cause to believe that the nature of the group's meeting at the property is different than could reasonably have been expected, based on the group's request or on the character of the group, and that YHA would not have entered into the agreement had it known the true nature of the intended meeting. Should YHA choose to exercise this right after such meeting has commenced at the Property, the group's payment for the services rendered to that point will be retained and the balance paid will be refunded.

Group Membership

As YHA Australia is a not-for-profit, membership based organisation, all bona fide groups of 10 or more people that stay with us will automatically qualify for group membership. This provides several benefits and is at no extra charge to you. Full details of this are available from our Group Coordinators.