

YHA Hobart Central | Groups Info



YHA Hobart Central is the most centrally located accommodation in Hobart, only two blocks from the city's waterfront. The hostel is an easy walk to the MONA museum ferry at Constitution Dock, Salamanca Place and a multitude of bars, restaurants and cafes. We have a range of co-living and private rooms available, perfect for a range of group sizes.

Why YHA Hobart Central for your next group stay?

Modern rooms for groups

YHA Hobart Central offers a great range of co-living and private rooms perfect for your next group stay.

Co-living rooms

Groups are easily accommodated in comfortable co-living share rooms at YHA Hobart Central, with secure shared bathrooms located on every floor. Each co-living room is equipped with secure lockers, linen and personal bed lamps. Rooms can easily be arranged by gender preference.

Private rooms

YHA Hobart Central has a selection of twin and double rooms, with either ensuite bathrooms or shared bathrooms, close to co-living rooms, for leaders who wish to stay close to their group with added privacy.

Shared Bathrooms

Functional, gender-allocated bathrooms are located on every floor and feature secure digital access, showers, toilets, vanity sinks, and mirrors in both ensuite and shared bathrooms.

Groups spaces

YHA Hobart Central has:

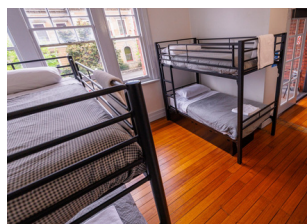
- Social/lounge room with TV
- Communal cooking facilities

Facilities

- Perfect for small or large groups
- Secure digital key card to bedrooms & bathrooms
- Lockers with power in all shared rooms
- Free Wi-Fi throughout the property

Group safety

YHA have strict child safety and group policies in all properties for enhanced safety, with added secure electronic key card access to all bedrooms, bathrooms and entrances.



At a glance

Whole Floor Booking Available	N
Co-living Rooms Share Bathroom	Y
Ensuite Co-living Rooms	Y
Private Rooms Share Bathrooms	Y
Ensuite Private Rooms	Y
Group Activity Space	N
Group Continental Breakfast Included	N
Groups Catering Available	N
Self Catering Permitted	N
24 Hour Reception	N
Staff On Site After Hours	N
Car parking Available (standard vehicle)	N

Address: 9 Argyle St, Hobart TAS, 7000

Phone: 03 6231 2660

Centrally Connected

- Minutes from the waterfront
- Walking distance to the MONA
- 20 minute drive from Hobart Airport

FAQ's

What are the check-in and check-out times? Check-in is from 2:00 PM, and check-out is by 10:00 AM.

Can we store our group's luggage at the property?

Yes, YHA provides luggage storage for groups upon arrival and departure.

Can we self-cater at the property? No, YHA Hobart Central does not allow self-catering at the property.

Will our group share rooms with other guests? No, groups are only booked into whole rooms, meaning you will only share with members from your own group.

Do you provide linen? Yes, YHA supplies all bed linen and blankets for guests. Please note that sleeping bags and external linen are not permitted. Towels can be added to your booking on request.

Is a deposit required to secure our booking? Yes, a deposit is required after submitting the completed booking form. Additional deposits may be required depending on the booking details.

Do we need to pay a security deposit? You may be required to pay a security deposit, depending on the size and type of group.

Can we book our group online? For safety and compliance reasons, **group bookings must be made via a YHA groups reservations agent.** Contact us to make an enquiry. YHA reserves the right to cancel online groups bookings.

BOOKING ENQUIRIES

yha.com.au/**group-bookings** | **groups@yha.com.au** | 1800 942 386